



**Plus Power Modular UPS**

La Marche's Plus Power Modular UPS (PPM) is working on True-double conversion topology. It is a truly modular UPS system which can easily scales in 20kVA to 300kVA.

PPM is available on 3Ph/3Ph (input/Output) configuration with 208VAC and 400VAC voltage options. Modular Design is applied in Power Modules, STS controller and Battery Module.

La Marche's PPM UPS offers high efficiency and overload capacity. Modular design option simplifies maintenance and replacement with low MTTP, and provides scalability for future load growth.



Shown Above:  
PPM Cabinet  
with 140kVA Capacity  
(Front Door Close)



Shown Above:  
PPM Cabinet  
with three 20kVA Power Module  
(Front Door Open)

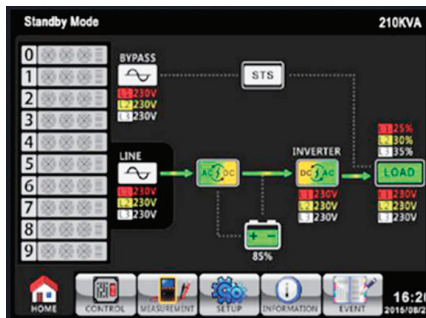
**Standard Features**

- High Efficiency and True Double Conversion Topology
- Modular design offers lower MTTR
- Hot Swappable
- 5.7" LED Display
- High reliable operation with bypass source with STS
- High Overload Capacity

**Applications**

- Data Centers
- Server Rooms
- Telecommunication
- Supply Critical Load
- Networking

**Display**



**20kVA PPM Power Module**



# Specifications

| Model                                | Plus Power Modular UPS 42U-140LV                                       |  |  |
|--------------------------------------|------------------------------------------------------------------------|--|--|
| Phase                                | 3P/3P                                                                  |  |  |
| Cabinet Capacity                     | 140kVA                                                                 |  |  |
| Battery Type                         | External Battery                                                       |  |  |
| One Power Module Capacity            | 20kVA                                                                  |  |  |
| Max Power Module Number              | 7+1                                                                    |  |  |
| <b>Input</b>                         |                                                                        |  |  |
| Nominal Voltage                      | 3 x 208/220 VAC (3Ph+N)                                                |  |  |
| Voltage Range                        | 182-253V at 90% to 100% Load<br>156-253V at 63% to 90% Load            |  |  |
| Nominal Frequency<br>Frequency Range | 50/60Hz (Auto Sensing)<br>40Hz-70Hz                                    |  |  |
| Power Factor                         | >0.99 at 100% Load                                                     |  |  |
| Harmonic Distortion (THDi)           | <3% @ 100% Load                                                        |  |  |
| <b>Output</b>                        |                                                                        |  |  |
| Nominal Voltage                      | 3 x 208V/220VAC (3Ph+N)                                                |  |  |
| Voltage Regulation<br>(Steady State) | +/- 1% Typical (Balanced Load); +/- 2% Typical (Imbalanced Load)       |  |  |
| Nominal Frequency                    | 50/60Hz                                                                |  |  |
| Frequency Range<br>(Synchronized)    | 46Hz-54Hz or 56Hz-64Hz                                                 |  |  |
| Overload Capability                  | 1 hour for 110%, 10 mins for 125%, 1 min for 150%, 200ms for >150%     |  |  |
| Harmonic Distortion                  | <=2% THD (Linear Load); <=4% THD (Non-linear Load)                     |  |  |
| Efficiency                           | Up to 92.5% at over 50% Load                                           |  |  |
| <b>Battery Charger</b>               |                                                                        |  |  |
| Nominal Voltage                      | +/-120V (12V x 20 pcs)                                                 |  |  |
| Float Charging Voltage               | 2.3V/Cell                                                              |  |  |
| Equalize Charging Voltage            | 2..35V/ Cell                                                           |  |  |
| Temperature Compensation             | Yes                                                                    |  |  |
| Maximum Charging Current             | 8A for each power module (Usadjustable)                                |  |  |
| <b>Physical</b>                      |                                                                        |  |  |
| Cabinet Dimension<br>(D x W x H) in  | 43.30 x 23.62 x 79.13                                                  |  |  |
| Cabinet Weight (lbs)                 | 487                                                                    |  |  |
| <b>Environment</b>                   |                                                                        |  |  |
| Operating Temperature                | 0-40c                                                                  |  |  |
| Relative Humidity                    | 0-95% non-condensing                                                   |  |  |
| Altitude                             | <1000m for Nominal Power                                               |  |  |
| IP Protection                        | IP 20                                                                  |  |  |
| <b>Management</b>                    |                                                                        |  |  |
| Smart RS-232/USB                     | Support Windows 2000/2003/XP/Vista/2008, Windows 7/8/10, Linux and MAC |  |  |
| SNMP                                 | Web browser                                                            |  |  |
| <b>Standards</b>                     |                                                                        |  |  |
| Safety                               | UL 1778,                                                               |  |  |
| EMC                                  | FCC Part 15, Subpart B Class A                                         |  |  |

## Power Module Configuration

| Model                  | Description                                         | Dimension (D x W x H) in | Weight (lbs) |
|------------------------|-----------------------------------------------------|--------------------------|--------------|
| PPM-20kVA Power Module | 3P/3P, 20 kVA Power Module, 208VAC Input and Output | 29 x 19.29 x 5.23 (3U)   | 76.05        |